



# Certificate of Compliance

**Certificate:** 1477017

**Master Contract:** 207199

**Project:** 2404086

**Date Issued:** April 27, 2011

**Issued to:** Stellar Technology  
237 Commerce Dr  
Amherst, NY 14228  
USA  
Attention: Victor Sears

*The products listed below are eligible to bear the CSA Mark shown with adjacent indicators 'C' and 'US' for Canada and US or with adjacent indicator 'US' for US only or without either indicator for Canada only.*



*Ron Wachowicz*

**Issued by:** Ron Wachowicz, C.E.T.

## **PRODUCTS**

- CLASS 2258 02** - PROCESS CONTROL EQUIPMENT - For Hazardous Locations
- CLASS 2258 82** - PROCESS CONTROL EQUIPMENT - For Hazardous Locations - Certified to US Standards
- CLASS 2258 04** - PROCESS CONTROL EQUIPMENT - Intrinsically Safe, Entity - For Hazardous Locations
- CLASS 2258 84** - PROCESS CONTROL EQUIPMENT - Intrinsically Safe, Entity - - For Hazardous Locations - Certified to US Standards

**CLASS 2258 02** – PROCESS CONTROL EQUIPMENT – For Hazardous Locations.

**CLASS 2258 82** – PROCESS CONTROL EQUIPMENT – For Hazardous Locations – To U.S. Requirements.

**Class I, Groups A, B, C and D; Ex d IIC T4; Ex nA IIC T4; Class I, Groups A, B, C and D; Class I, Zone 1 or 2; (A)Ex d IIC T4; Class I, Zone 2, (A)Ex nA IIC T4; Tamb = -50°C to +120°C:**

STELLAR, Model xT25XX\* Series Pressure Transducers, rated 36 Vdc max; Maximum Working Pressure 34500 kPa (5000 psi) for “D” Enclosure; 1.5 times Pressure Range for “G” Enclosure, Dual Seal; for use in Hazardous locations. Explosion-proof, Non-incendive as per installation drawing number 220578.



**Certificate:** 1477017

**Master Contract:** 207199

**Project:** 2404086

**Date Issued:** April 27, 2011

---

STELLAR, Model T25XX Series Temperature Transducers, rated 36 Vdc max; Maximum Working Pressure 34500 kPa (5000 psi) for "D" Enclosure; 1.5 times Pressure Range for "G" Enclosure, for use in Hazardous locations. Explosion-proof, Non-incendive as per installation drawing number 220578.

\* All models with the exception of the Series T25XX Temperature Transducers are rated Dual Seal.

**CLASS 2258 04 - PROCESS CONTROL EQUIPMENT - Intrinsically Safe Entity - For Hazardous Locations**

**CLASS 2258 84 - PROCESS CONTROL EQUIPMENT - Intrinsically Safe Entity - For Hazardous Locations - To U.S. Requirements.**

**Class I, Groups A, B, C and D; Ex ia IIC T3C; Class I, Groups A, B, C and D; Class I, Zone 0, 1 or 2, (A)Ex ia IIC T3C; Tamb = -50°C to +120°C:**

STELLAR, Model DT2550 or GT2550 Series Pressure Transducers, for use in Hazardous locations; intrinsically safe when assembled with circuit 220688-1 and connected as per installation drawing number 220578. Maximum Working Pressure 34500 kPa (5000 psi) for "D" Enclosure; 1.5 times Pressure Range for "G" Enclosure, Dual Seal. Entity Parameters: Vmax = 36 Vdc, Imax = 100 mA, Ci = 24nF, Li = 2.7 uH

### **APPLICABLE REQUIREMENTS**

C22.2 No 0 - 10 General Requirements - Canadian Electrical Code Part II.

C22.2 No 30 - M1986 - Explosion-proof Enclosures for Use in Class I Hazardous Locations.

C22.2 No 94 - M1991 - Special Purpose Enclosures.

C22.2 No 142 - M1987 - Process Control Equipment.

C22.2 No 157 - M92 - Intrinsically Safe and Non-Incendive Equipment for Use in Hazardous Locations.

C22.2 No 213 - M1987 - Non-Incendive Electrical Equipment for Use in Class I, Division 2 Hazardous Locations.

CAN/CSA E60079-0:07 - Electrical apparatus for explosive gas atmospheres. PART 0: General requirements.

CAN/CSA E60079-1:07 - Electrical apparatus for explosive gas atmospheres. PART 1: Construction and verification test of flameproof enclosures of electrical apparatus.

CAN/CSA E60079-11:02 - Electrical apparatus for explosive gas atmospheres. PART 11: Intrinsic safety "i".

CAN/CSA E60079-15:02 - Electrical apparatus for explosive gas atmospheres. PART 15: Type of protection "n"

UL 698, 13th Edition - Industrial Control Equipment for Use in Hazardous (Classified) Locations.



**Certificate:** 1477017

**Master Contract:** 207199

**Project:** 2404086

**Date Issued:** April 27, 2011

---

UL 913, 7th Edition - Intrinsically Safe Apparatus and Associated Apparatus for use in Class I, II, III, Division 1, Hazardous (Classified) Locations.

UL 1203, 4th Edition - Explosion-Proof and Dust-Ignition-Proof Electrical Equipment for Use in Hazardous (Classified) Locations.

UL 1604, 3rd Edition - Electrical Equipment for Use in Class I and II, Division 2, And Class III Hazardous (Classified) Locations.

NEMA 250, 1997 - Enclosures for Electrical Equipment (1000 Volts Maximum)

UL 60079-0, 5th Edition - Electrical apparatus for explosive gas atmospheres. PART 0: General requirements.

UL 60079-1, 6th Edition - Electrical apparatus for explosive gas atmospheres. PART 1: Construction and verification test of flameproof enclosures of electrical.

UL 60079-11, 5th Edition - Electrical apparatus for explosive gas atmospheres. PART 11: Intrinsic safety "i".

UL 60079-15, 3rd Edition - Electrical apparatus for explosive gas atmospheres. PART 15: Type of protection "n"

ANSI/ISA-12.27.01-2003 - Requirements for Process Sealing Between Electrical Systems and Flammable or Combustible Process Fluids.



## *Supplement to Certificate of Compliance*

**Certificate:** 1477017

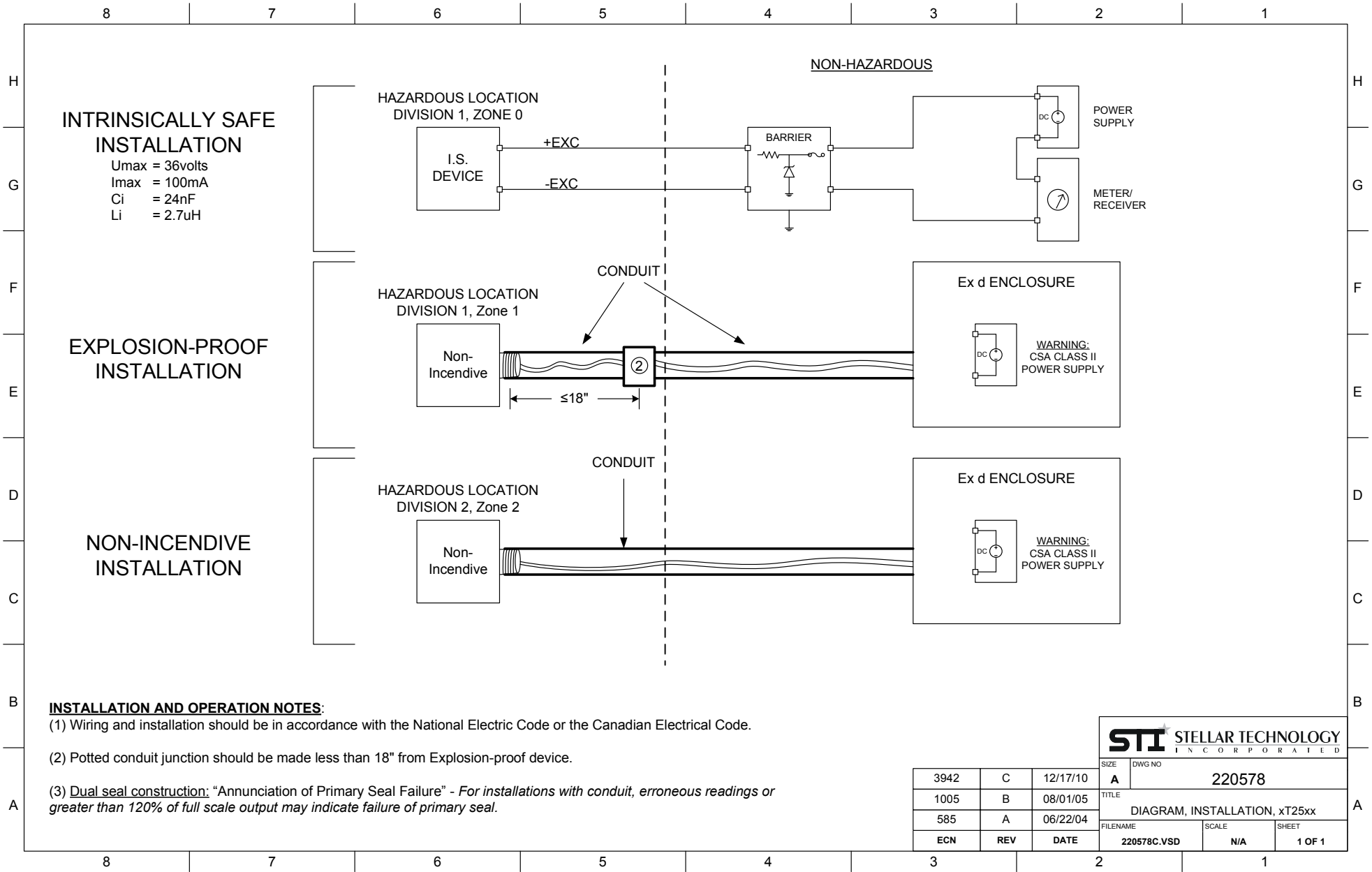
**Master Contract:** 207199

*The products listed, including the latest revision described below, are eligible to be marked in accordance with the referenced Certificate.*

### **Product Certification History**

---

<b>Project</b>	<b>Date</b>	<b>Description</b>
2404086	April 27, 2011	Update report 1477017 to include report corrections, updated drawings and to remove Factory Dielectric Strength Testing.
2102762	July 23, 2009	Update report 1477017 to include updated construction and evaluation to ANSI/ISA 12.27.01 for Dual Seal.
1477017	September 3, 2004	Original Certification of Pressure Transducers, Model xT25XX Series and Model DT2550 or GT2550 Series.



**INSTALLATION AND OPERATION NOTES:**

(1) Wiring and installation should be in accordance with the National Electric Code or the Canadian Electrical Code.

(2) Potted conduit junction should be made less than 18" from Explosion-proof device.

(3) Dual seal construction: "Annunciation of Primary Seal Failure" - For installations with conduit, erroneous readings or greater than 120% of full scale output may indicate failure of primary seal.



3942	C	12/17/10	SIZE <b>A</b>	DWG NO <b>220578</b>
1005	B	08/01/05	TITLE DIAGRAM, INSTALLATION, xT25xx	
585	A	06/22/04	FILENAME 220578C.VSD	SCALE N/A
ECN	REV	DATE	SHEET 1 OF 1	