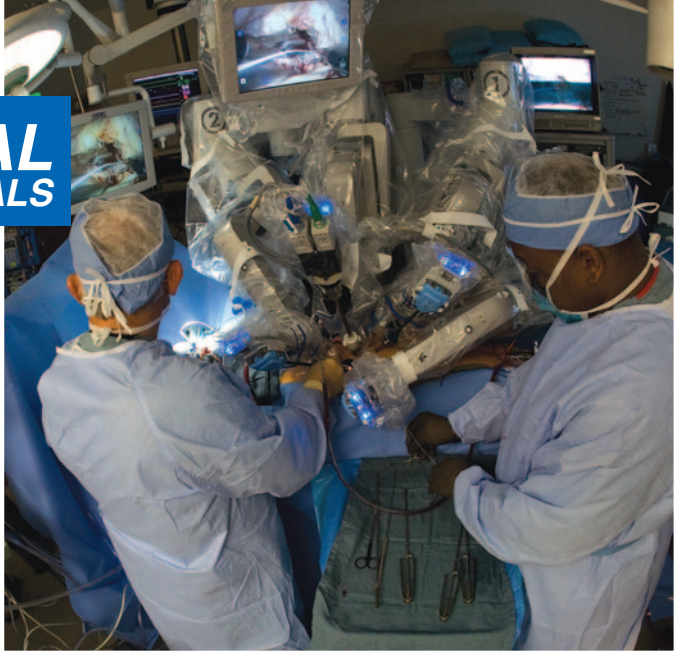


MEDICAL & PHARMACEUTICALS



stellartech.com



Pressure, Load/Force/Torque, Displacement, and Temperature Sensors

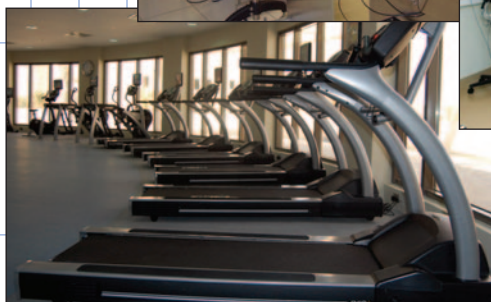


Pressure Sensors

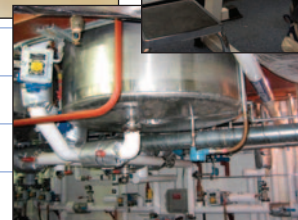
- Pressure Ranges from 1 to 100,000 PSI
- Absolute, Gage, True Gage, Differential, Vacuum, Barometric
- Accuracies to 0.05% FSO.
- High Frequency Response
- All Welded Stainless Steel (17-4, 15-5, Inconel, Monel, Hastelloy)
- mV/V, Analog or Digital Outputs (including RS232, RS485, CANbus)
- Special Non-magnetic Materials Available
- Comprehensive Calibration Records are Standard
- Engineered-to-Order Custom Designs

Load Cells, Force Sensors, Reaction Torque Sensors

- Load Ranges from Grams to 2 Million lbf
- Tension, Compression, and Tension & Compression
- Complete Selection of Standard and Special Configurations
- All Welded Stainless Steel (17-4, 15-5, Inconel, Monel, Hastelloy)
- Special Non-magnetic Materials Available
- Miniature and Subminiature Versions
- mV/V, Analog or Digital Outputs (including RS232, RS485, CANbus)
- Multiple Bridge Configurations
- Comprehensive Calibration Records are Standard
- Engineered-to-Order Custom Designs



Our Specialty...
**CUSTOM
ENGINEERING**



Sensors for Medical/Pharmaceutical Industry

Stellar Technology's complete selection of pressure transducers/transmitters, load cells, force sensors, reaction torque transducers, temperature sensors, and LVDT displacement sensors provides design engineers in the medical instrumentation and pharmaceutical industries many options when selecting test and measurement sensors for their applications. Stellar Technology's engineering expertise, proven sensor technology, field experience, and manufacturing capabilities provide customers with high reliability sensors for a broad range of applications. Our engineering and manufacturing center in Amherst, New York, is uniquely designed to deliver both standard products and custom-engineered special products. Rely on Stellar Technology to add value to your test and measurement solution.

Medical / Pharmaceuticals Solutions



LVDT Displacement Sensors

- Stroke Ranges from ± 0.01 in. to ± 18.5 in.
- Linearities from 1% to 0.1%
- Spring Guided, Captive Guided, Free Unguided Armatures
- AC and DC Versions
- All Welded Stainless Steel
- Precision Gaging Units with Air Push Armatures
- Submersible Designs
- Subsea Versions Submersible to 7500 ft. of Seawater

Temperature Transducers and Transmitters

- Temperature Ranges from -320°F to $+750^{\circ}\text{F}$
- No Thermowell Required
- Customer Specified Probe Lengths
- All Welded Stainless Steel Construction
- Hermetically Sealed
- Dual Temperature and Pressure Configurations
- Analog and Digital Outputs (Including RS232, RS485, CANbus)
- Customer Specified Process Connections
- Engineering-to-Order Custom Designs

Our Specialty...
**CUSTOM
ENGINEERING**



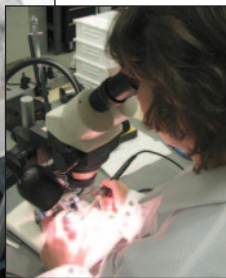
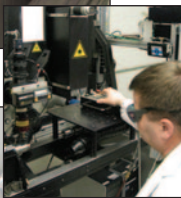
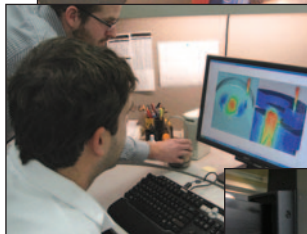
Medical and Pharmaceutical Sensors For:

- Robotic Surgery
- MRI Fluid Measurement
- Skeletal Analysis
- Medical Research and Development
- Non-invasive Fluid Control Systems
- Automated Liquid Handling Systems
- Force-Over-Area Pressure Measurements
- Physical Therapy Equipment
- Orthopedics
- Tablet Presses
- Fluid Fill and Dispensing Systems
- Blood Processing Equipment
- Prosthetics Research and Development
- Medical Sterilizers
- Homogenizing Equipment
- Pill Weighing
- Seal Integrity Testing
- Pasteurizing Systems
- Emulsifying Equipment

Call: **716.250.1900**

Capabilities

Stellar Technology designs and manufactures a comprehensive offering of pressure transducers/transmitters, load cells, force sensors, torque transducers, temperature transmitters, and displacement sensors used in test and measurement applications across a wide range of industry sectors including aerospace, oil and gas, marine/oceanographic, automotive, medical, industrial automation, geophysical, power generation and many more.



Why Stellar Technology? What causes specialists to choose Stellar Technology sensors for their application solutions?

One word: Capabilities.

Stellar Technology combines sales capabilities, engineering capabilities, manufacturing capabilities, and service/support capabilities into one focused business objective:

Provide the customer with the optimum sensor solution.

Sales Capabilities:

- Experienced technical sales professional located in your area
- Direct link to Stellar Technology's design engineers
- Knowledgeable inside sales engineers
- Complete pre-sales application review process
- Facilitate technical Lunch & Learns at customer's site

Engineering Capabilities:

- Design engineers with years of practical sensor application experience
- Specialists in mechanical, electronic, and software design
- Innovative design and simulation tools
- ISO9001 registered documentation and control
- Work directly with customer's engineers
- Creative solution providers

Manufacturing Capabilities:

- Complete vertical integration (raw material through final calibration)
- 18 CNC machines (up to 8-axis)
- Wire and probe EDM machining
- Laser and TIG welding
- Ultrasonic cleaning
- Micro assembly
- Automated pressure compensation and calibration
- 5 load cell calibration systems (to 600,000 lbf)
- 1,000,000 inch-lbf reaction torque calibrator
- High-reliability/traceability assembly and test area
- Comprehensive inventory of raw materials
- Finished goods inventory programs (standard and customer-specific)

Service/Support Capabilities:

- Complete repair and recalibration (including other manufacturers)
- Rapid-response on-site technical field support
- Ready access to regional sales offices
- Order status and expediting
- Direct access to Stellar Technology's design engineers
- 24 hour web access to technical manuals

Your Application-Solution SourceSM



ISO 9001/AS9100

Due to the nature of technology, changes are inevitable. For latest technical specifications, see our website.

237 Commerce Drive • Amherst, NY 14228 • USA

Tel: 716.250.1900 • Fax: 716.250.1909

Web: stellartech.com • Email: info@stellartech.com

Copyright © 2015 STI • All Rights Reserved
Datasheet P/N 236209C DCN 9382