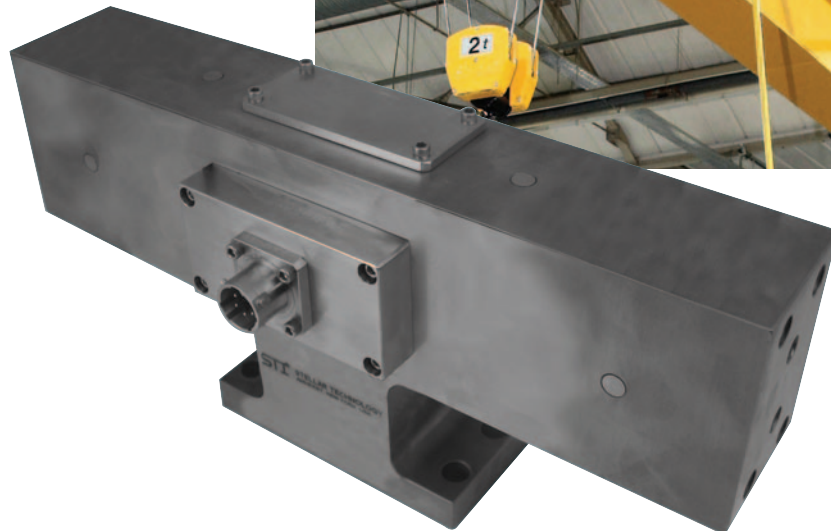




Product Highlights

Stellar Technology's 4-Axis Load Cell Controls Overhead Crane



In this unique force measurement application, the challenge for STI engineers was to create a 250 pound, 4-axis load cell with very high off-axis capability and minimal cross-talk. The load cell also had to fit into the user interface of a new material handling system. The solution was a modified Model CLC910 load cell producing 0.2% accuracy and 4 separate $\pm 10\text{Vdc}$ outputs. This unit is constructed from nickel plated steel and is shock and vibration protected to endure rugged use on the shop floor.

This load cell is actually an integral part of the interface between an operator and a mechanical lifting system. Fitted with handles for the operator to grasp, this load cell acts as a joystick, responding to the operator's hands as they push, pull, lift, or rotate the component being moved. Buttons located on the handles control the clamp/unclamp function as this system directs a servo-driven overhead gantry crane to move heavy components into the desired position.

Stellar Technology
237 Commerce Drive
Amherst, NY 14228 • USA
Tel: 716.250.1900
Fax: 716.250.1909
Web: stellartech.com
Email: info@stellartech.com